



Here's the front of the building and the arrow points to the keypad on which you use the key fob to get in.

Place the blue key fob in the area indicated by the red circle and move it around a little until you hear a high pitched noise and you can then push the door open.

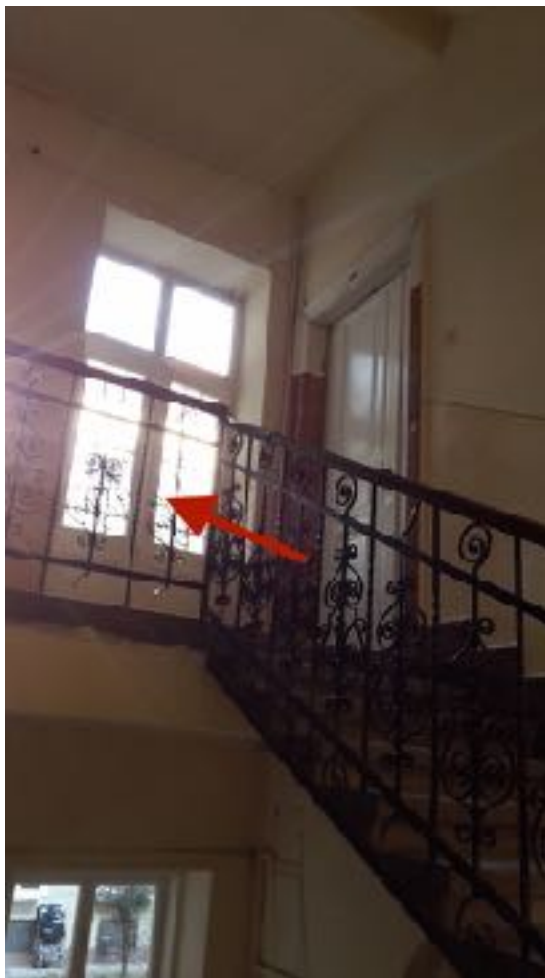




On back of the front door is a button which opens the door when you want to go out.

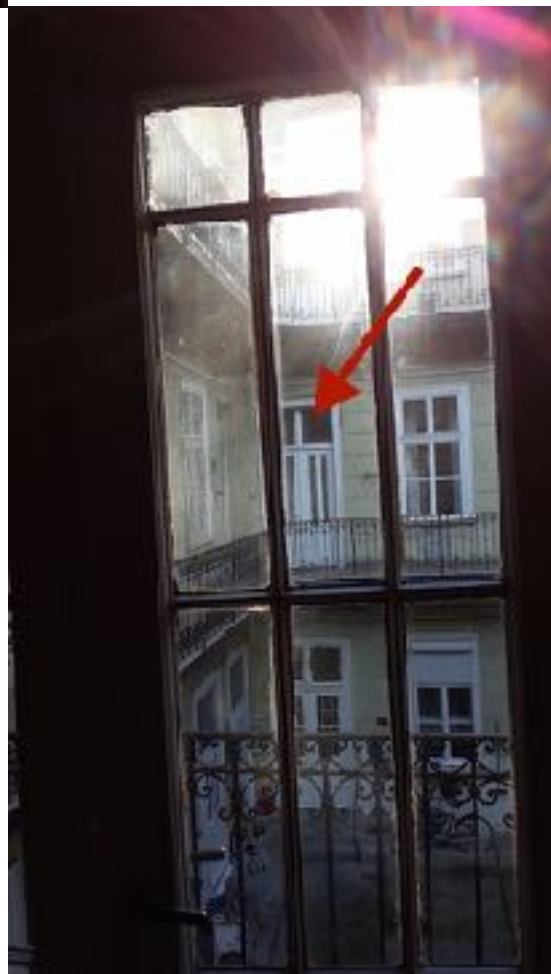
To the right as you enter the building is the entrance to the stairwell. Take the stairs to the first floor.





This is the exit to the first floor walkway

And this is the door of the apartment when looking from the stairs on the first floor.





Walk round to the left to reach the door.

The key you have is for the lower lock.

